

Technical Service Bulletin

Date: 3/16/2004

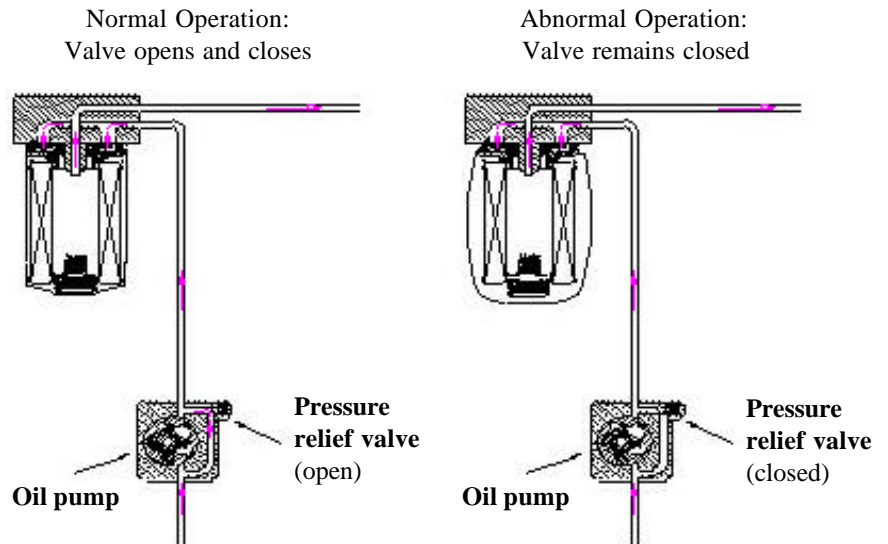
Product Description: AMSOIL full flow oil filter SDF-20

Subject: Application Notice

DESCRIPTION

The engine oil systems of certain Mitsubishi applications may produce abnormally high oil pressure, exceeding the structural capacity of standard spin-on oil filters, including the AMSOIL SDF-20. Improper operation of the pressure-regulating valve in the engine causes the high oil pressure, resulting in over-pressurization of the lubricating system and damage to the oil filter.

AMSOIL has decided to withdraw recommendation of the SDF-20 in place of the Mitsubishi part number MZ690116 oil filter. The AMSOIL SDF-20 continues to be the recommended filter for many other applications not associated with this problem.



Affected Mitsubishi Models

| Year | Model | Engine |
|---------|---------------|-----------------------------|
| 2001-03 | Montero Sport | V6-213 (3.5 L) SFI 24 Valve |
| 2001-03 | Montero Sport | V6-181 (3.0 L) SFI 24 Valve |
| 2001-02 | Montero | V6-213 (3.5 L) MFI 14 Valve |
| 1999-00 | Montero Sport | V6-213 (3.5 L) SFI or MFI |
| 1997-00 | Montero | V6-213 (3.5 L) MFI |
| 1994-96 | Montero | V6-214 (3.5 L) MFI |

Submitted By: BGS

Approved By: DRA

Approval Date: 3/16/04

Distribution: Internal All